



RECP #: 754599

RECORDED 6/5/2019 AT 3:37 PM BK# 2624 PG# 268
Debra K. Lee, CLERK OF LARAMIE COUNTY, WY PAGE 1 OF 1

STATE OF WYOMING CORNER RECORD

(In compliance with the CORNER PERPETUATION AND FILING ACT, Wyoming Statutes, 1997 Section 33-29-140, et. seq., and the Rules and Regulations of the Board of Registrations for Professional Engineers and Professional Land Surveyors)

NORTHEAST CORNER SECTION 20, T. 17 N., R. 62 W., 6TH P.M., LARAMIE COUNTY, WYOMING

GLO: LIMESTONE 18X14X5 SET 10 IN. DEEP. MARKED W 3 NOTCHES ON S. SIDE AND 4 ON E. SIDE FOR THE COR. TO SECS. 16, 17, 20, 21.

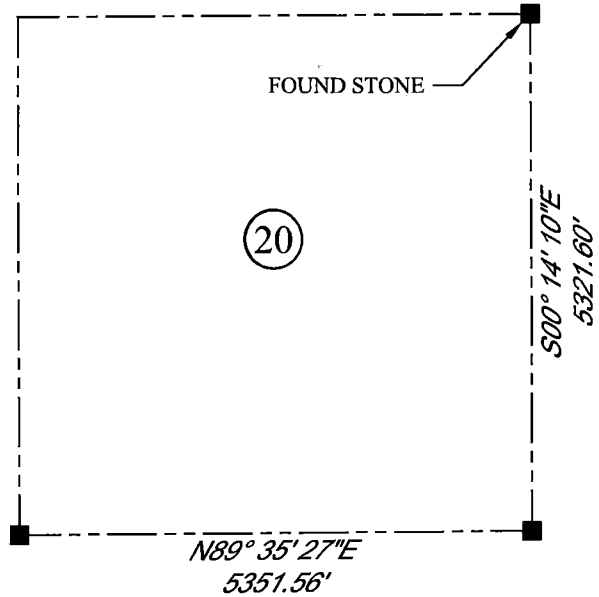
FOUND: STONE SET AT FENCE CORNER WITH FENCE LINES EXTENDING EAST/WEST AND NORTH.

SET: NOTHING



SCALE: NONE

NORTH DETERMINED BY
G.P.S OBSERVATIONS



LEGEND:

- FOUND BLM CAP
- FOUND USFS CAP
- FOUND STONE
- FOUND PRIVATE MONUMENT
- ◆ CALCULATED POSITION
- ▲ SET MONUMENT (LS10245)
- SECTION LINE

DATE OF FIELD WORK: 08/30/2018 OFFICE REFERENCE: MERIDEN

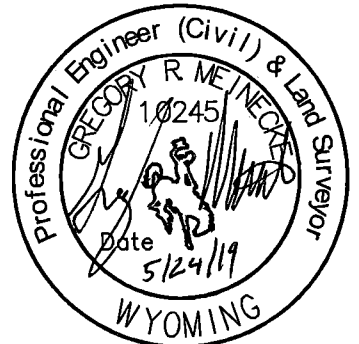
CROSS INDEX DIAGRAM

	1	2	3	4	5	6	7	8	9	10	11	12	13	14	15	16	17	18	19	20	21	22	23	24	25
A																									
B																									
C	6																								
D		5																							
E			4																						
F				3																					
G					2																				
H						1																			
I																									
J																									
K																									
L	7																								
M		8																							
N			9																						
O				10																					
P					11																				
Q						12																			
R							13																		
S	18							14																	
T		17							15																
U			16							16															
V				15							15														
W					14							14													
X						13							13												
Y							12								12										
Z								11								11									
									10								10								
										9								9							
											8								8						
												7								7					
													6								6				
														5								5			
															4								4		
																3								3	
																	2								2
																		1							1

WOOD
2615 AVIATION DRIVE
SHERIDAN, WY 82801
PH: 307-675-6400

wood.

THIS CORNER RECORD WAS
PREPARED BY ME OR UNDER
MY DIRECTION AND
SUPERVISION,
SEAL AND SIGNATURE



CORNER NAME: NORTHEAST SECTION: 20 T. 17N., R.62 W. ; 6TH P.M. CROSS-INDEX # N-9
SBRPELS/PLSW: MARCH 1994; PLSW JANUARY 1998